

\$3.00

(membership includes monthly subscription)

The Digital

# Viking



## Twin Cities

PC USER GROUP

NEWSLETTER

Minneapolis & St. Paul, Minnesota USA • Vol. 32 No. 1 • August 2011

*TC/PC Exists to Facilitate and Encourage the Cooperative Exchange of PC Knowledge and Information Across All Levels of Experience*

### August 2011

**General Meeting:  
Tuesday, August 9, 7 PM**

- [Last Month's Meeting ..... 2](#)
- [Treasurer's Report ..... 2](#)
- [O'Reilly UG Program ..... 2](#)
- [Testing Memory ..... 3](#)
- [Image Retention \(Burn-in\)  
on LCD ..... 4](#)
- [Nibblers ..... 5](#)
- [Spotify Online Music  
Arrives in the U.S. .... 7](#)
- [TC/PC Calendar. .... 9](#)
- [Motorola Xoom and  
Samsung HotSpot ..... 10](#)
- [Word Tips ..... 12](#)

## General Meeting

**Tuesday, August 9, 2011**

**at 7:00 PM**



that was easy.

**The Staples Store**

**Location: Staples Store**

**4200 West 78th Street**

**Bloomington, MN 55435**

If you thought the Staples Store was only good for purchasing office supplies like, well, staples, you have a nice surprise awaiting at the August meeting. We will visit the Staples store in Bloomington and tour their computer/ computer supplies department to see the wide variety of products for sale. We will also learn about the computer services they offer from installation of hardware and software to troubleshooting to on-site training. They offer an attractive one-year "Peace of Mind" package for computer purchasers, which we'll learn about as well.

Relatively new to the Twin Cities market, Staples has earned a reputation for quality products and responsive service. Its computer sales and service serve up serious competition for Best Buy and Microcenter and OfficeMax.

Join us to learn what sets Staples apart and how it can serve you.

Because we will meet at Staples there will be no Web SIG.

Directions: From 494 exit on France Ave. Go north on France to 78th St, a stoplight. Turn west on 78th Street, go past Perkins. It's just a short distance to the strip mall and Staples. ☺

TC/PC is a Member of



**24-Hour Information • [www.tcpc.com](http://www.tcpc.com)**


Membership info page 19 • Application form inside back cover

# Last Month's Meeting: Show Us Your Gadget-Your 10 Minutes of Fame

By Sharon Trout, Treasurer, TC/PC Users Group

The first of two presenters at the July General Meeting of TCPC was David Dole, who shared his enthusiasm for adopting "Dole Dating, the briefest, most impossible to miss-read format" for writing dates. The formula is simple and results in an 8 character code: (1) January is written as "JA", all other months are indicated by the 1st and 3rd letters (FB, MR, AR, MY, JN, JL, AG, SP, OT, NV and DC); (2) months are always written in the middle, and; (3) day of the month and year can be either first or last. For example August 3, 2011 could be written either as 03AG2011, or 2011AG03 using this format.

Our second presenter was Irv Elliott, who showed several examples of pictures and photos he had retouched using Paint Shop Pro. He says it is "easy to use" and, at less than \$100 retail, relatively inexpensive. His "before" and "after" shots demonstrated the program's versatility, among other things:

(1) removing the line created by splicing two photos; (2) "cutting" people from in front of an unfocused background and then "pasting" them into a different, and better focused, shot; (3) removing the cables from the original photo to provide an unobstructed view of a zebra at the zoo; (4) "squaring up" a photo that had been taken just a little bit off kilter, (5) and, since one frustration of the group photo at any gathering is the fact that the photographer is frequently not included in the picture, Irv showed how Paint Shop Pro allowed him to snap the shot and be in it as well. Impressive indeed, Irv! [Return to Page 1](#) 

TC/PC-Profit-and-Loss-Statement-7/1/2010-through-6/30/2011	
<b>Income</b>	
Membership Dues	4,138.00
PO Box Key Deposit Refund (box closed 12/21/10)	2.00
<b>Total Income</b>	<b>4,140.00</b>
<b>Expense</b>	
APCUG Membership (renewed Dec 2010)	50.00
Depreciation Expense (projector)	200.00
Newsletter Postage	644.00
Newsletter Printing	1,585.00
Office Expense -- postage to mail checks to vendors	7.92
Renewal Mailings	8.80
<b>Total Expense</b>	<b>2,495.72</b>
<b>Net Income -- (Fiscal Year 2010-2011)</b>	<b>1,644.28</b>


*Fiscal Year 2010\_2011 and, to the best of my knowledge, is accurate and complete.*  
Sharon L. Trout, Treasurer  
Twin-Cities-PC-Users-Group



## TC/PC Joins O'Reilly Computer Books UG Program

Our User Group is officially registered as a member of the O'Reilly program Here is the deal for our members on O'Reilly ebooks. If you are interested in purchasing,

please email [sqwalbran@yahoo.com](mailto:sqwalbran@yahoo.com) and Sharon Walbran will send you the discount code.

"Buy 1 Ebook, Get 1 Free Go to [oreilly.com](http://oreilly.com) and use the discount code. When you buy ebooks through [oreilly.com](http://oreilly.com) you get lifetime access to the book, and whenever possible we provide it to you in five, DRM-free file formats--PDF, ePub, Kindle compatible .mobi, DAISY, and Android APK--that you can use on the devices of your choice. Our ebook files are fully searchable and you can cut, paste, and print them. We also alert you when we've updated the files with corrections and additions. Orders can be placed online at [oreilly.com](http://oreilly.com) or by calling 800-998-9938. Your members are also entitled to a discount on O'Reilly conferences and tutorials. Other special discount offers may also be forwarded to your group from time to time. " [Return to Page 1](#) 

# Testing Memory

By Vinny LaBash, Regular Columnist, Sarasota PCUG, Florida

July 2011 issue, Sarasota Monitor, [www.spcug.org](http://www.spcug.org), labash (at) spcug.org

From a strictly technical perspective, memory is any form of electronic storage. You probably know the computer you use every day has memory. Other everyday devices also use similar types of electronic memory. Your TV, car radio, washing machine, wrist watch, and cell phone are a few examples. Physical memory is both a necessary and useful component of modern computers. If your computer's CPU were compelled to access the hard drive for every piece of data it wanted, its speed would be glacial. Memory is so useful that when something happens to affect it we notice it immediately. It's a little like atmospheric oxygen, unobtrusive and invisible. Take it away and we know instantly that something has gone horribly wrong.

Memory failures can be among the most difficult hardware problems to diagnose because so many other things can act like memory malfunctions. If your system was put together with a motherboard populated with less than first-class components like low quality liquid fueled capacitors, they might swell and burst even under normal usage. Lockups, USB ports which refuse to work for no apparent reason, blue screens of death, and error messages pointing to memory failures are among some of the breakdowns that can occur. Video pauses and application crashes are additional symptoms that can afflict your PC, and their cause may not have anything to do with a memory crash.

Excess heat can cause the CPU to malfunction in ways that generate error messages flatly stating that memory is the culprit. The CPU will inexplicably drop pages from memory after the CPU just asked for those pages. The CPU gets confused and produces an error message accusing the memory chips of causing a "Fatal Exception". If that's not misleading enough, messages stating that certain memory pages were never received can appear on the screen.


Strange behavior alone is not proof of a memory problem, but don't be hasty to dismiss the possibility. Memory problems do cause lockups and blue screens of death for no apparent reason. How can one differentiate between a memory crash and something doing a plausible imitation?

Sometimes the BIOS can help. Your BIOS should tell you how much memory you have installed. Many memory failures show up in the BIOS as a loss of installed memory. A high-quality motherboard will have a BIOS that will report the amount of memory in each slot. With some careful sleuthing you can easily calculate how much memory should be in each slot, and use that information to find the memory module that's causing the problem.

There is a free advanced memory test available based on the original Memtest86. Download it from [www.memtest86.org](http://www.memtest86.org). This is probably the best memory testing tool you could hope to find, free or otherwise, but with all things that seem too good to be true, there are trade-offs. Some of your computer's memory must be accessed by the utility while the tool is running and that range of memory can't be tested. Another downside is that the tool requires you to shut down the computer and run the test from a boot disk. Don't let that stop you from using Memtest86. Use it according to directions and you will resolve problems that would otherwise be beyond the capabilities of ordinary mortals.

Memory failures can prevent the system from starting up completely. Your machine may attempt to help you by issuing a series of diagnostic beeps on attempted startup. There is no standard for diagnostic beeps so they vary with each manufacturer. You will have to access the manufacturer's web site to translate the series of beeps to meaningful information. It's essential to read the documentation for the motherboard and the BIOS. Some machines don't beep at all; with others a single beep indicates a memory refresh failure.

In a surprising number of cases a memory module has merely worked its way loose over time and is no longer seated properly in its slot. It takes only a few minutes to reseat the memory. If that doesn't help, remove one of the memory modules and turn the machine back on. If the problem persists, replace the module, remove a different module, and repeat until the system starts again. The module most recently removed is the guilty party. You may not be able to use this method if your machine insists that the modules be installed in pairs.

Lastly, don't over-clock your PC without proper ventilation or a reliable method to keep your vital components cool. [Return to Page 1](#) 

## Should you worry about image retention on an LCD monitor?

By Linda Gonse, Editor/Webmaster, ORCOPUG (Orange County PCUG), California, July 2011 issue, Nibbles 'n Bits, [www.orcopug.org](http://www.orcopug.org)  
editor (at) orcopug.org

I just bought a brand new HP ZR22w LCD flat screen monitor. My understanding always has been that burn-in (also called image retention or image persistence) does not occur on LCD screens. But, an HP help file that came with my monitor dispelled that notion.

“Image retention occurs when the monitor is left ON while displaying the same image for an extended period of time, leaving a ‘shadow’ of this image on the screen.”

I researched the burn-in problem further and About.com, <http://bit.ly/k05clD>, said “Image retention can be corrected in most cases and is easily prevented.” That statement was a relief!

The article went on to list methods that could be used to prevent image retention/persistence.

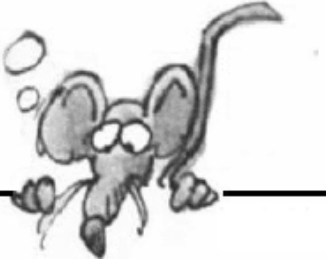
- “Set the screen to turn off after a few minutes of screen idle time under the Power functions in Windows. Turning the monitor display off will prevent an image from being displayed on the screen for extended periods of time. Of course, this could be annoying to some people as the screen may go off more than they wish.”
- “Use a screen saver that either rotates, has moving graphic images or is blank. This also prevents an image for being displayed in screen for too long.”
- “Rotate any background images on the desktop. Background images are one of the most common causes for image persistence. By switching backgrounds every day or few days, it should reduce the change of persistence.”
- “Turn off the monitor when the system is not in use. This will prevent any problems where the screen saver or power function fails to turn off the screen and result in an image sitting on the screen for long times.”

The bottom line is not to be too worried about image burn-in, but keep it in mind when using your LCD monitor and you can easily prevent it from happening.

If somehow it does happen, see <http://bit.ly/k05clD> for instructions on how to correct existing image retention on LCD monitors.

Finally, the HP text helpfully revealed another problem not known to all LCD monitor users, “the fluorescent lights inside the display have a limited lifetime and will gradually degrade.” This is reason enough not to leave a monitor on 24/7, even with a screensaver enabled. Use the timed Energy/Power setting to automatically turn the monitor off when your system is idle for a while.

[Return to Page 1](#) 



# NIBBLERS

By Jeannine Sloan

## Windows 7 Advantages

If you've moved to Windows 7, there's a raft of software — entire categories of software — that you simply don't need. Here's a partial list:

Antivirus software	Defraggers	Backup packages
Registry cleaners	Disk partitioners	For-pay firewalls
Search software	Indexing/search applications	

Read the whole article. It is worth the time. Links to parts 1 and 2 are included in the narrative.

<http://windowssecrets.com/top-story/dont-pay-for-software-you-dont-need-part-3/>

## 107 Best Websites

We've taken the effort to categorize the websites and picked only those we believe to be the best ones and which will most likely be useful to you. <http://www.makeuseof.com/pages/best-websites>

## KPP = Kernel Patch Protection

The kernel connects the application software to the hardware of a computer. **Kernel Patch Protection (KPP)**, informally known as **PatchGuard**, is a feature of 64-bit (x64) editions of Microsoft Windows that prevents patching the kernel. It was first introduced in 2005 with the x64 editions of Windows XP and Windows Server 2003 SP 1.

"Patching the kernel" refers to unsupported modification of the central component or kernel of the Windows operating system. Such modification has never been supported by Microsoft because it can greatly reduce system security and reliability. Excerpt from

[http://en.wikipedia.org/wiki/Kernel\\_Patch\\_Protection](http://en.wikipedia.org/wiki/Kernel_Patch_Protection)

## Site Recommendation

Here is an online SLR camera simulator. Use it to learn what those camera settings do:

<http://camerasim.com/camera-simulator.html> From Digital Focus ezine

## Handy Tool

Here is a suggestion for a handy tool for your PC repair/upgrade/troubleshooting toolkit. It's a USB-to-IDE/SATA adapter, one that allows you to plug any "naked" hard drive into a USB port. Search for 'USB to IDE/SATA'. Many cost under \$20.

## Edit Word 2010 Default Font

To change Word's default font press Ctrl-Shift-F to open the Font dialog. Change the font as needed. Click Save as Default, choose "All documents based on the Normal.dotm template," and click OK.



## Site Recommendation

[www.thenextweb.com](http://www.thenextweb.com) describes itself:

"We live to bring news and **views from an international** perspective. With a brilliant team of editors & writers across Europe, Australia, Middle East, Africa, Asia and North & South America, you can rest assured that if it's worth hearing about: you'll hear it from us first."

I found a graphic timeline beginning in 1984 comparing Apple and Microsoft. At the bottom of the page are links to other infographics. Fascinating site! Check it out.

Five Tips to Avoid Computer Viruses

	Think Before You Click
	Be Wary of Attachments
	Keep Software Up to Date
	Use Anti-Virus and Firewall
	Avoid the Dark Corners Online

## Free Poster

<http://askbobrankin.com/Five%20Tips%20to%20Avoid%20Computer%20Viruses.pdf>

## Cloud Computing

Got Hotmail? You already have free web-based Office. Login to your Hotmail account, hover over the SkyDrive menu, and a list appears with Word, Excel, PowerPoint and OneNote options available.

## ISP Piracy Warnings

A coalition of copyright holders and ISPs like Comcast and Verizon this week signed up for the "Copyright Alert System," which will provide notices to consumers if they are suspected of illegal downloading. Read it here: <http://www.pcmag.com/article2/0,2817,2388261,00.asp>

## SD/SDHC/SDXC

The standard SD card is the largest and has been in use the longest. MiniSD cards are smaller than standard and larger than Micro cards and not often used. MicroSD cards are tiny.

Generally, microSD cards cost slightly more than SD cards of the same size and speed class, but that and physical size are the only effective differences.

microSDHC card, or Micro Secure Digital High Capacity have capacities up to 32GB.

SDXC, or Secure Digital Extended Capacity can theoretically reach capacities up to 2TB.

The SD/SDHC/SDXC classification isn't just for cards, but for devices as well.

Backwards compatibility is built in, so if a camera has SDHC support, it will support standard SD cards too. If a camera or device has SDXC support, it will support SD and SDHC. These cards have speed ratings too; Class 2, 4, 6, 10 and so on, with Class 10 having the fastest read-write performance.

<http://www.google.com/search?q=sd%2Fsdhc%2Fsdxc&sourceid=ie7&rls=com.microsoft:en-us:IE-Address&ie=&oe=>

## Microsoft to Drop Windows Name?

"Microsoft is seriously considering ditching the 'Windows' brand name in favor of something new.

The idea is to rebrand the new super-operating system with something that better fits with [the company's] vision of the future." It certainly seems very hard to believe Microsoft will ever drop the Windows name. Its been around since 1985, making it only four years younger than the name "PC" in the way we understand it today. Read the article at:

<http://tinyurl.com/3w2f867>

Contributed by Ed Aubitz

## Site Recommendations

<http://www.techrepublic.com/> for networking

<http://www.computerhope.com/> for troubleshooting

<http://www.processlibrary.com/> for replacing corrupted OS files

Contributed by Sallie Northrop [Return to Page 1](#)



# Spotify Online Music Service Arrives in U.S.

by Ira Wilsker, [iwilsker@sbcglobal.net](mailto:iwilsker@sbcglobal.net)

## WEBSITES:

<http://www.spotify.com/us/hello-america/>

You may have not heard of Spotify, but millions of Europeans are intimately aware of the world class online music service. Now, Spotify is available in the U.S., in free, premium, and mobile versions. There has been a lot of domestic online buzz about Spotify, but many Americans are unaware of what may arguably be the largest legal online music service, with a claimed 15 million tracks of music available.

At present, users who would like to subscribe to the free version of the Spotify service must have an invite to join, and several affinity groups and consumer products are offering invites to Spotify. The general public can request an invite on the main Spotify webpage ([www.spotify.com/us/hello-america](http://www.spotify.com/us/hello-america)), and an invite will be sent via email as capacity becomes available. An invite is not necessary for those who would like to subscribe to the paid Spotify service, which starts at \$4.99 per month for the "Unlimited" subscription, and \$9.99 monthly for the "Premium" service. Spotify is available in PC and MAC versions for desktops, laptops, netbooks, and most smart phones, making these millions of music tracks readily available whenever and wherever needed. The free desktop version is advertiser supported, with ads displayed along the right edge of the desktop display, and an occasional short audio ad after a number of selections have been played; the paid subscriptions do not display or play ads. The offline versions are only available by paid subscription.

I received an early invite to Spotify, and signed up for the free version. After registering online using the registration code provided by Spotify in the email invitation, I downloaded the 5 megabyte installer for the desktop version. The installation ran smoothly, and upon completion, opened the desktop utility. On the left edge of the desktop utility are a series of choices which can locate and display any music already on the computer, import playlists from Windows Media Player, add titles to a playlist, and display any compatible devices that may be connected to the computer. The "What's New" feature opens a tabbed central window that displays new releases, the most popular tracks and albums selected by users, and "Feed" which displays music shared by your friends on Facebook as well as the latest news from Spotify.

The millions of tracks available can be searched by title or album from the search box, and results can be easily selected into playlists. According to Spotify, "... creating playlists is as easy as drag and drop. Each new playlist is saved to your account, and will be accessible from wherever you use Spotify." Being a fan of classical Gershwin, I did a search for "Rhapsody in Blue", and well over 100 versions and related titles appeared. On the left of each item is a gold star that can be selected, and this helps create the playlist. On the left side of the window is a button "+ New Playlist", which I clicked on, and aptly named Rhapsody in Blue. I clicked on the "Starred" link on the left, and the selections that I had chosen were all displayed; I painted the list, and dragged the starred list over to my newly created Rhapsody in Blue playlist, and my customized playlist was immediately created. I added some "An American in Paris" and "Porgy and Bess", and created my version of about three hours of musical bliss. As each item in the playlist is played, the image of the original album cover appears on the bottom left corner of the display.

Spotify offers the opportunity to share tracks and playlists with others. "To us, sharing music is one of life's great pleasures. That's why we've made it so simple for you to share tracks and playlists with your friends. When we say 'simple', we mean one-click-simple." I had to try it, and clicked on the playlist title in the left column, and a "Share" link appeared on the top of the page. With a single click, the playlist can be shared on Facebook, Twitter, or Microsoft Messenger. The Spotify software instantly posted my playlist on Facebook, and with the displayed link at

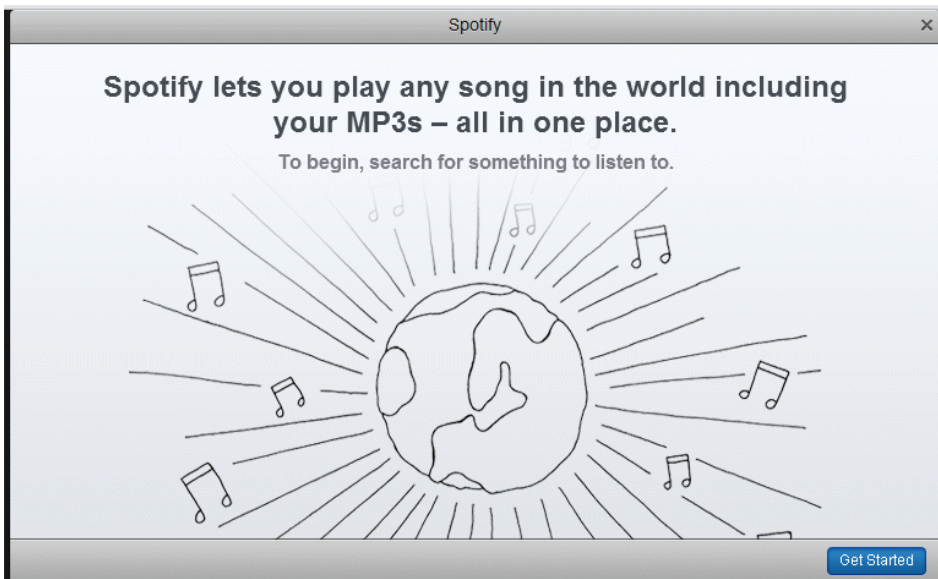
[open.spotify.com/user/iwilsker/playlist/1EYbroWYaBd72nf4hldVXR](https://open.spotify.com/user/iwilsker/playlist/1EYbroWYaBd72nf4hldVXR), anyone can download the free Spotify player and listen to my playlist. I downloaded the Spotify installer to my laptop using the same username and password created for my desktop computer, installed it, and the playlists I created on my desktop magically appeared on my laptop! One click, and I was listening to my favorite music.

The features of Spotify, including any prepared playlists, can be played over most mobile phones with a free or paid subscription, but a paid subscription is necessary to access the playlist offline. In order to listen to streaming Spotify over a mobile or smart phone, a paid premium subscription and a 2.5G or 3G (or faster) connection, or WiFi, is necessary. Users of iPhones or Android devices can download the Spotify app giving full access to Spotify, including synching your own music files with Spotify. According to the Spotify website, apps for Symbian phones (mostly from Nokia), Windows phones, and Palm phones are in development and are expected to be available soon, but apps for some of these phones may have recently become available. I have a Nokia smart phone with the Symbian operating system, and using the phone's browser (I use Opera Mobile for my phone browser), I connected to [m.spotify.com](https://m.spotify.com), which informed me that a compatible Symbian app was available, so I selected to download the 2.4 mb application to my phone. I was a little disappointed when a window appeared informing me that I needed a premium subscription in order to use the app on my Nokia Symbian phone. Apps for other phone operating systems may possibly be available, which can be determined by connecting the phone browser to m.spotify.com, and following the on screen prompts. If an app is available, it will be displayed, along with installation instructions.

For those who may desire additional features, the "Unlimited \$4.99" or "Premium \$9.99" monthly subscriptions will provide additional benefits over the free service. The Unlimited version has all of the features of the free version, but does not display or play any advertisements, and has the ability to be available for up to 14 days when traveling outside the U.S. The Premium version has all of the Unlimited features, plus increased functionality on mobile phones, offline availability of playlists on both computers and mobile phones (no internet connection required), unlimited international access (for travelers going outside the U.S.), enhanced sound quality, and the capability to play Spotify through connected music systems (possibly without a computer). It should be noted that at present, offline content is limited to a precise maximum of 3,333 tracks, which should be adequate for most users.

For those who would like to legally access millions of tracks of online music, and play or share tracks and playlists at will, Spotify may be very entertaining. Oh, and my Rhapsody in Blue playlist is still playing on my computer.

[Return to Page 1](#) 





Meetings start at 7:00 PM (9:00 AM on Saturday) unless otherwise noted. \*Meets at Edina Executive Plaza.

**August**

**September**

sun	mon	tue	wed	thu	fri	sat
	1	2	3	4	5	6
7	8	9 General Mtg 7:00 PM Staples Store At Staples—4200 W. 78th, Blmgtn	10	11	12	13 Linux on Saturday* 9:00-Noon
14	15	16	17	18	19	20 MS Office (including Access) on Saturday* 9:00—Noon
21	22	23	24	25	26	27
28	29	30	31	1	2	3
4	5	6	7	8	9	10 Linux on Saturday* 9:00-Noon
11	12	13 General Mtg 7:00 PM Keith Aleshire Summit Place 6-7PM PicPerf SIG	14	15	16	17 MS Office (including Access) on Saturday* 9:00—Noon
18	19	20	21	22	23	24
25	26	27	28	29	30	

# Review: Motorola XOOM™ and Samsung 4G LTE Mobile Hotspot

By David Williams, Secretary, Online Services, and Program Coordinator, Central Iowa Computer User Group, [www.ciacug.org](http://www.ciacug.org), david.williams.ciacug (at) gmail.com



Earlier this month I was able to borrow a Motorola XOOM™ (<http://bit.ly/h0zSae>) and a Samsung 4G LTE Mobile Hotspot from Verizon for my trip to the Southwest Computer Conference in San Diego, CA. I took them along with my own Verizon Droid X and my Galaxy Tab. The Mobile Hotspot worked very well for me out in San Diego (*Des Moines only has 3G*), and I was able to check out the Xoom for about 2 weeks. While I was able to “test drive” both myself, I was also able to demo both while at the conference and at our user group meeting the following week.



## Motorola Xoom

My experience with the Xoom was very favorable. Much has been written about the specs of the Xoom, so I will focus on my personal observations. The Xoom was running Android 3.1 and was quite fast. I'll admit I didn't load a lot of different applications, I just had the ones I used the most from my phone and Galaxy tab. I found most were available from the android market and displayed correctly on the Xoom.

I found the interface to be very intuitive and had no problem moving around. The Xoom has no physical buttons, and while it took a bit of getting used to, it was easy to navigate the settings and find what you needed. (*I was not able to figure out how to screen print, so I have no screen shots to show.*)

The screen is very clear and both pictures and videos are quite sharp and crisp. I was able to scroll thru images very quickly. The high resolution made everything easier to view and widescreen made watching movies enjoyable. The Xoom can also record Video at 720p.

One of the Apps I downloaded was Dolphin Browser HD. With that app I was able to surf the web like I was on my laptop and not need to use the mobile versions of the websites. I was able to view the web as it was meant to be viewed with both HTML5 and flash pages. I could go to Amazon and watch a movie that I had bought. As I am Amazon prime member, this is a plus as prime members get free videos, but only from their website. Now I can watch these movies on the go, and the movie stream is just fine over Wi-Fi, both from the Verizon 4G and my home Wi-Fi. The web loaded very quickly with the high-speed connections, and I had no problem displaying any of the sites I visited.

I had several people hold the Xoom in one hand and the iPad2 in the other and they could not notice any weight difference. I had no trouble using the Xoom, but I found my stand useful if I was doing much interaction with it for a longer period of time.

One of the features that impressed me was the battery life. Using Wi-Fi and the GPS tend to use a lot of battery. I found if you turn them off you could prolong the life of the battery. I watched about three hours of video on the return trip from San Diego and only used about 15% of the battery. I did have everything else turned off, but found that the level of battery usage for watching video very impressive. Even with normal use it did better than my Tab and way better than my phone. While your usage may vary, I find it safe to say you'll be as impressed as I am.

While the Xoom has a 32GB internal memory, it is supposed to get SD support with a future software update. That means you can store more videos and music for long trips. The Xoom is believed to be getting 4G support soon, so then you can really zip around the web. Downloading movies and large files will be super fast, but could get expensive for those on a limited data plan.

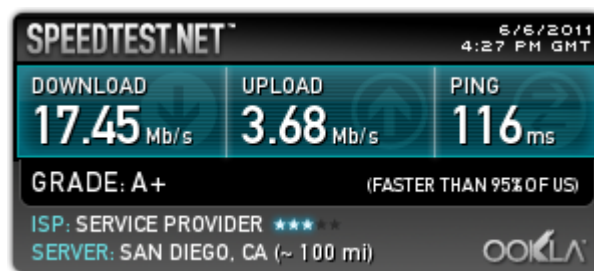
## 4G Mobile Hotspot

While this was a very small device, I really enjoyed using it. It is very fast on 4G and I could carry it in my front pocket. The only place I got a chance to test it was in San Diego. I first tested it on my laptop, then the Galaxy Tab and finally the Xoom, and I found it ran fast on all of them. The conference had Wi-Fi, and the Hotspot met or beat it in most head to head tests. The hotspot at times hit speeds comparable to my high speed connection at home. When I was using my laptop in the hotel room and downloading some software deals I had gotten at the conference, it felt like I was at home and not in a hotel room, which is always a great treat on a trip. I must say Verizon's 4G really rocks. The slowest I got was about 5 mbps with a bad connection. My usual speed was between 8 mbps and 11 mbps and I got up to 17 mbps on my laptop. The normal on 3G was between 1 mbps to 3 mbps. Look at Jim Perry on YouTube talking about Verizon 4G on his Motorola Xoom (<http://bit.ly/qCtBVF>)

11327 kbps on 4G



14732 kbps on 4G



What else can I say but it is fast. It does use up battery, but it can be connected to a power source while you use it. I like using a device better than a phone as a hotspot as you can use your phone if you have a hotspot and not run down the battery. I would recommend this hotspot to anyone who travels and needs fast connectivity in a 4G city. When more and more areas get 4G connections I can see these as being the standard.


## Summary

I would recommend the Xoom to anyone who wants to do light web surfing and computing, email and social networking. It is great for games and videos. I believe a tablet is easier for children to use than a small notebook. I believe they are here to stay, but I am not going to predict which ones will make it and which ones will not. I will say 4G / LTE is the way of the future and my next phone will have it. [Return to Page 1](#)

## Word Tips: Understanding Hyphens and Dashes

Word supports the use of both hyphens and dashes. Actually, it supports three types of hyphens and two types of dashes. It is important to understand how Word handles each of these, as they can affect the appearance of your document.

- **Regular hyphens.** These are created by simply typing the hyphen key. This is the key that is to the right of the zero key on the keyboard. It is sometimes mistakenly called a dash key. Regular hyphens are used to create compound words, such as “mix-up,” or to indicate a minus sign in an equation. If a compound word appears near the end of a line, the second word will be displayed on the next line, if necessary, with the first word and hyphen remaining on the previous line.
- **Optional hyphens.** These are created by pressing **CTRL+-** (**CTRL** and the hyphen key). Optional hyphens are typically used in the middle of a word, between syllables, to indicate where a word should be broken between lines, if Word deems it necessary. Optional hyphens are the type inserted automatically when you use the Hyphenation tool in Word. The optional hyphen does not appear on any printout unless it is actually used at the end of a line.
- **Non-breaking hyphens.** These are created by pressing **CTRL+SHIFT+-** (**CTRL+SHIFT** and the hyphen key). Non-breaking hyphens are used in compound words to indicate that both words and the hyphen should be treated as a single word when Word is forming lines. In this case, the compound word will never be broken over two lines. It is also helpful to use non-breaking hyphens in phone numbers.
- **En dash.** An en dash is a typographic dash that is as wide as a lowercase “n” character. These dashes are typically used to denote ranges of numbers, as in 3–7. You create an en dash by pressing **CTRL** and the minus sign on the numeric keypad. You can also create it by holding down the **ALT** key as you type 0150 on the numeric keypad. If necessary, Word will break a line right after the en dash, not before it. In other words, the en dash always stays with the characters immediately preceding it.
- **Em dash.** An em dash is a typographic dash that is supposed to be as wide as a lowercase “m” character. In Word, however, the em dash is twice as wide as the en dash. (The width of the em-dash can vary from font to font.) Em dashes are used in creating breaks in sentences, between two separate thoughts. Word will substitute an em dash automatically as you are typing if you type a word, two hyphens in a row, and another word. You can also explicitly enter an em dash if you press **CTRL+ALT** and the minus sign on the numeric keypad, or you can enter one by holding down the **ALT** key as you type 0151 on the numeric keypad. If necessary, Word will break a line right after the em dash, not before it. The em dash always stays with the word immediately before it.

The foregoing items describe the behavior and purpose of each of the hyphens and dashes used in Word. If you are using a dash or hyphen and it does not behave as indicated here, then you may be using the wrong type. For instance, if a word will not break as you expect between two lines, you may be using a non-breaking hyphen instead of one of the other types. [Return to Page 1](#) 

Copyright © 2011 by Sharon Parq Associates, Inc. Reprinted by permission. Thousands of free Microsoft Word tips can be found online at <http://word.tips.net>.